

10th CHALLENGES in CARDIOLOGY

VIRTUAL EDITION

3, 4, 10 and 11 july 2020

PROGRAMME

Scientific Support

**CHALLENGES in
CARDIOLOGY**

challengesincardiology.com

Organization

DNA PRIME
SCIENTIFIC EDUCATION
POWERED BY: FactorChave

Web Management

FOLLOW
HEALTH & BUSINESS

Official Agency

FactorChave

factorchave.pt

FACULTY MEMBERS

Alberto Mello e Silva | Luz Saúde, Portugal

Alexandre Antunes | Centro Hospitalar de Leiria, Portugal

Ana Timóteo | Sociedade Portuguesa Cardiologia, Portugal
Hospital Santa Marta, CHULC, Portugal
NOVA Medical School, Lisboa, Portugal

Aníbal Ferreira | NOVA Medical School, Lisboa, Portugal
Hospital Curry Cabral, CHULC, Portugal

António Gonçalves | Hospital de Santa Marta, CHULC, Portugal

Arnt Kristen | Heidelberg Heart Center, Germany
Heidelberg Amyloidosis Center - University of Heidelberg, Germany

Aurora Andrade | Centro Hospitalar Tâmega e Sousa, Portugal

Beatriz Santos | Hospital de Santo André, Centro Hospitalar de Leiria, Portugal

Brenda Moura | Hospital das Forças Armadas, Portugal
Cintesis-Cardiocare da FMUP, Portugal

Cândida Fonseca | Heart failure clinic - Hospital S. Francisco Xavier, CHLO, Portugal
NOVA Medical School, Faculdade de Ciências Médicas, Portugal

Carlos Aguiar | Centro Hospitalar Lisboa Ocidental, Portugal

Carlos Rabaçal | Hospital Vila Franca de Xira, Portugal

Catarina Ruivo | Centro Hospitalar de Leiria, Portugal

Cláudio Guerreiro | Centro Hospitalar Vila Nova de Gaia / Espinho, Portugal

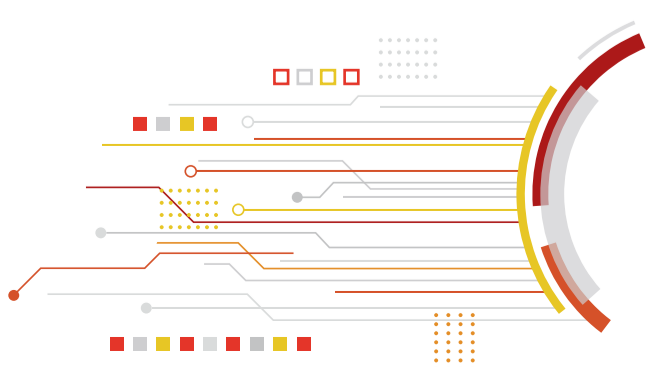
Cristina Gavina | Hospital Pedro Hispano-ULS Matosinhos, Portugal
Faculdade de Medicina da Universidade do Porto, Portugal

Daniel Caldeira | Faculdade de Medicina da Universidade de Lisboa, Hospital Santa Maria (CHULN),
Lisbon, Portugal

Daniel Ferreira | Digital Clinical Center - Hospital da Luz Lisboa, Portugal

Diogo Cavaco | Hospital da Luz Lisboa, Portugal
Hospital de Santa Cruz, Portugal

Dulce Brito | Centro Hospitalar Universitário Lisboa Norte, Portugal
Faculdade de Medicina da Universidade de Lisboa, Portugal



Eduardo Infante de Oliveira | Hospital de Santa Maria, CHLN, Portugal
Hospital Lusíadas Lisboa, Portugal
Faculdade de Medicina, UL, Portugal

Fausto Pinto | Centro Académico Médico de Lisboa (CAML), Portugal
Faculdade de Medicina, UL, Portugal

Filipe Macedo | Faculdade de Medicina da Universidade do Porto, Portugal
Centro Hospitalar e Universitário São João Porto, Portugal
Programa Nacional para as Doenças Cérebro-Cardiovasculares, Portugal

Francisco Araújo | Hospital Beatriz Ângelo, Portugal

Francisco Soares | Centro Hospitalar Leiria, Portugal

François Mach | Geneva University Hospital, Switzerland
Geneva Faculty of Medicine, Switzerland

Gabriel Steg | Hôpital Bichat, France
Assistance Publique-Hôpitaux de Paris, France

Gerasimos Filippatos | The Attikon University Hospital, University of Athens, Greece

Graça Castro | Centro Hospitalar e Universitário de Coimbra, Portugal

Hélder Dores | Hospital da Luz Lisboa, Portugal

Joana Pimenta | Centro Hospitalar Universitário S. João, Portugal

João Morais | Centro Hospitalar de Leiria, Portugal
Federação das Sociedades de Cardiologia de Língua Portuguesa, Portugal

John Eikelboom | McMaster University, Canada
Population Health Research Institute, Canada
The Hamilton General Hospital, Ontario, Canada

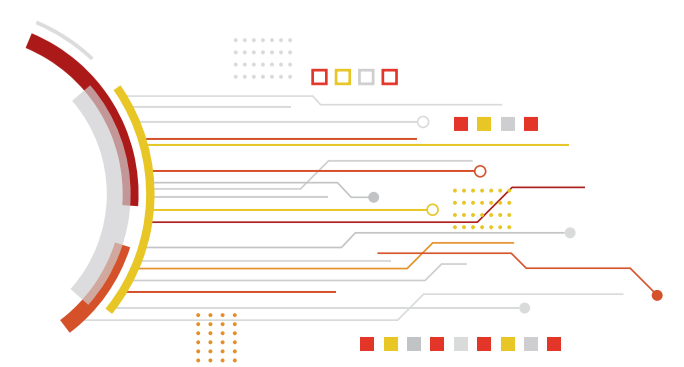
Jorge Ferreira | UNICOR - Unidade de Cuidados Intensivos Cardíacos, Portugal
Hospital de Santa Cruz, CHLO, Portugal
Sociedade Portuguesa de Cardiologia, Portugal

Jorge Mimoso | Centro Hospitalar e Universitário do Algarve, Portugal

José Ferreira Santos | Hospital da Luz Setúbal, Portugal

José Ilídio Moreira | Hospital de Vila Real, CHTMAD, Portugal

José Ramón Juanatey | University Hospital Santiago de Compostela, Spain



José Silva Cardoso | Faculdade de Medicina da Universidade do Porto, Portugal

José Tuñon | Fundación Jiménez Díaz, Madrid, Spain
Autónoma University, Madrid, Spain

Justin Ezekowitz | Canadian VIGOUR Centre, Canada
University of Alberta, Canada

Keith Fox | Centre for Cardiovascular Science, University of Edinburgh, United Kingdom

Luciana Ricca Gonçalves | Centro Hospitalar Universitário São João, Porto, Portugal

Luís Elvas | Centro Hospitalar e Universitário de Coimbra, Portugal

Luís Mendes Pedro | Hospital Santa Maria (CHULN), Lisbon, Portugal
Faculty of Medicine, University of Lisbon, Portugal
Hospital da Luz Torres de Lisboa, Lisbon, Portugal

Luís Oliveira | Centro Hospitalar Universitário Cova da Beira, Portugal

Manuel Teixeira Veríssimo | Faculdade de Medicina da Universidade de Coimbra, Portugal
Hospital Distrital da Figueira da Foz, Portugal

Marco Costa | Centro Hospitalar e Universitário de Coimbra, CHUC, Portugal
Hospital da Luz de Coimbra, Portugal

Mário Oliveira | Santa Marta Hospital, Lisbon, Portugal
CUF Infante Santo Hospital, Lisbon, Portugal
Institute of Physiology, Faculty of Medicine of Lisbon, Portugal

Marisa Peres | Hospital Distrital de Santarém, Portugal

Martin Cowie | Imperial College London, United Kingdom

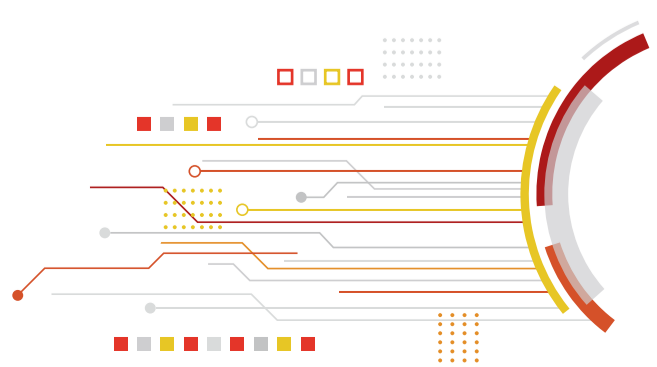
Miguel Mendes | Hospital de Santa Cruz, CHLO, Portugal

Miguel Sousa Uva | Hospital de Santa Cruz, CHLO, Portugal

Paulo Bettencourt | Hospital CUF Porto, Portugal
Unidade de Investigação Cardiovascular Porto, Portugal
Faculdade de Medicina da UP, Portugal

Pedro Matos | APDP, Portugal
Hospital CUF Infante Santo - Lisboa, Portugal

Ricardo Fontes-Carvalho | Centro Hospitalar de Vila Nova Gaia, Portugal
Faculdade de Medicina da Universidade do Porto, Portugal



Rui Baptista | Centro Hospitalar e Universitário de Coimbra, Portugal
iCBR, Faculdade de Medicina da Universidade de Coimbra, Portugal

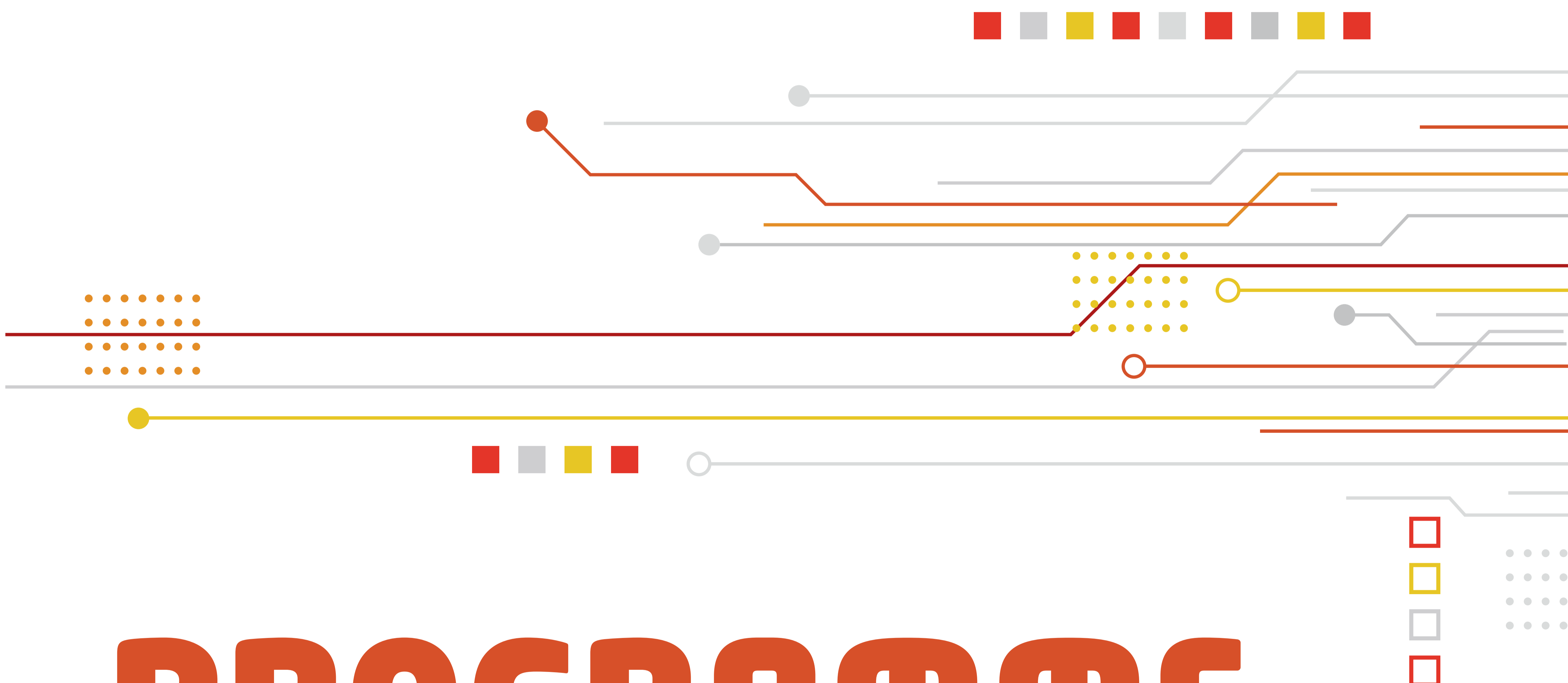
Rui Providência | Barts Heart Centre, St Bartholomew's Hospital, London, United Kingdom
Newham University Hospital, London, United Kingdom

Sílvia Aguiar | Hospital de Santa Marta, Lisboa, Portugal
Hospital da Cruz Vermelha Portuguesa, Lisboa, Portugal
NOVA Medical School, Faculdade de Ciências Médicas, UNL, Portugal

Sílvia Monteiro | Centro Hospitalar e Universitário de Coimbra, Portugal

Tiago Taveira | CEO Magalhães & Taveira-Gomes Sociedade Médica, Portugal
MEDCIDS-FMUP | FCS-UFP | IUCS-CESPU, Portugal

Victor Gil | Hospital Lusíadas Lisboa, Portugal



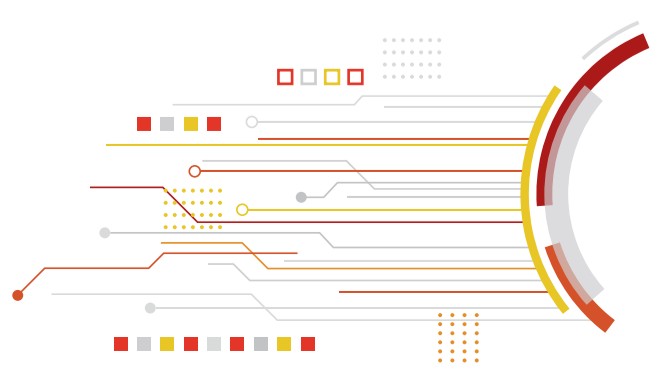
PROGRAMME

3rd JULY | FRIDAY

- 17:00 - 17:45 **Heart Failure and Chronic Kidney Disease. Challenges in RAASi optimization: Hyperkalemia Management / José Silva Cardoso**
Chair: **João Morais** / Discussant: **Aníbal Ferreira, Aurora Andrade**
- 17:45 - 18:30 **"Vericiguat" a new open avenue for medical treatment in patients with heart failure / Justin Ezekowitz**
Chair: **Brenda Moura** / Discussant: **Marisa Peres**
- 18:30 - 19:00 Visit the virtual exhibition or consult the clinical cases
- 19:00 - 19:45 **Statins and combination therapies. How they are changing the modern cardiovascular medicine / François Mach**
Chair: **Manuel Teixeira Veríssimo** / Discussant: **Alberto Mello e Silva, Hélder Dores**
- 19:45 - 20:30 **Chronic coronary syndromes. Myocardial revascularization or optimal medical treatment? / José Ramón Juanatey**
Chair: **Victor Gil** / Discussant: **Marco Costa, Miguel Sousa Uva**

4th JULY | SATURDAY

- 09:30 - 10:15 **Cardiac amyloidosis. Diagnosis and management / Arnt Kristen**
Chair: **Dulce Brito** / Discussant: **Sílvia Aguiar**
- 10:15 - 11:00 **How to optimize HF-REF therapy along the patient pathway / Martin Cowie**
Chair: **Cândida Fonseca** / Discussant: **Rui Baptista, Joana Pimenta**
- 11:00 - 11:30 Visit the virtual exhibition or consult the clinical cases
- 11:30 - 12:15 **High risk patients with atherosclerosis. From lipid lowering therapy up to glycaemic control / José Tuñón**
Chair: **Francisco Araújo** / Discussant: **José Ilídio Moreira, Alexandre Antunes**
- 12:15 - 13:00 **New directions on catheter ablation to manage cardiac arrhythmias / Rui Providência**
Chair: **Mário Oliveira** / Discussant: **Diogo Cavaco, Luís Elvas**

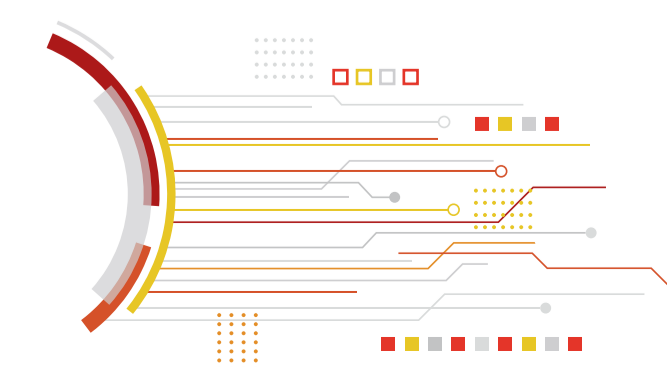


10th JULY | FRIDAY

- 17:00 - 17:45 **The role of telehealth beyond the COVID-19 era / Daniel Ferreira**
Chair: **Filipe Macedo** / Discussant: **Francisco Soares, Tiago Taveira**
- 17:45 - 18:30 **Acute coronary syndromes. A continuing challenging topic / Jorge Ferreira**
Chair: **Sílvia Monteiro** / Discussant: **Ana Timóteo, Jorge Mimoso**
- 18:30 - 19:00 Visit the virtual exhibition or consult the clinical cases
- 19:00 - 19:45 **NOACs a successful story / John Eikelboom**
Chair: **Carlos Aguiar** / Discussant: **Luciana Ricca Gonçalves, Daniel Caldeira**
- 19:45 - 20:30 **Strategies to manage heart failure. From the acute stage up to the long term treatment / Cristina Gavina**
Chair: **Paulo Bettencourt** / Discussant: **António Gonçalves, Catarina Ruivo**

11th JULY | SATURDAY

- 09:30 - 10:15 **Critical appraisal to ESC guidelines on chronic coronary syndromes / Carlos Rabaçal**
Chair: **Miguel Mendes** / Discussant: **Cláudio Guerreiro, Luís Oliveira**
- 10:15 - 11:00 **SGLT2 inhibitors a new option to manage patients with heart failure / Gerasimos Filippatos**
Chair: **Pedro Matos** / Discussant: **Beatriz Santos, Graça Castro**
- 11:00 - 11:30 Visit the virtual exhibition or consult the clinical cases
- 11:30 - 12:15 **Vascular protection. Coronary heart disease and peripheral artery disease. Two sides of the same coin / Keith Fox**
Chair: **Fausto Pinto** / Discussant: **Luís Mendes Pedro, Ricardo Fontes-Carvalho**
- 12:15 - 13:00 **Update on antiplatelets. Diabetes and long term treatment / Gabriel Steg**
Chair: **João Morais** / Discussant: **Eduardo Infante de Oliveira, José Ferreira Santos**



PLATINUM

SPONSORS



GOLD

SPONSORS



A. MENARINI PORTUGAL



SILVER

SPONSORS



SUPPORTER

SPONSORS

