

A graphic featuring a stylized heart in the center, composed of overlapping segments in blue, red, and dark purple. From the heart, several thin, branching lines extend outwards, resembling a network or a tree. The lines are colored in shades of blue, red, and purple, matching the heart's segments. The background is white.

**9<sup>th</sup>**

**CHALLENGES in  
CARDIOLOGY**

**JUNE 28th - 29th 2019**  
Palace Hotel Monte Real

# **SUMTHINK**

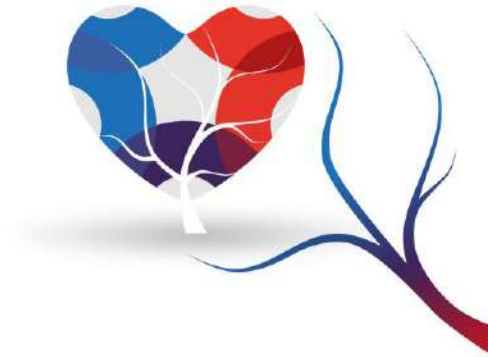
## **MEDICAL DIAGNOSTICS**

**NANOPARTICLE-BASED  
ULTRA HIGH SENSITIVITY  
PORTABLE  
TROPONIN MEASUREMENT**





# CONFLICT OF INTERESTS



**NONE TO DECLARE**

# UNMET CLINICAL NEED



**ISCHEMIC HEART DISEASE**  
**NUMBER ONE CAUSE OF DEATH GLOBALLY [7.400.000/YEAR]**



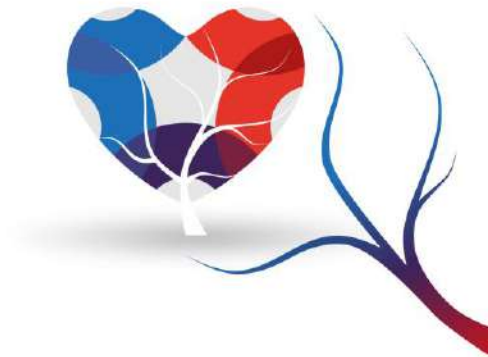
**ACUTE**

**CHRONIC**

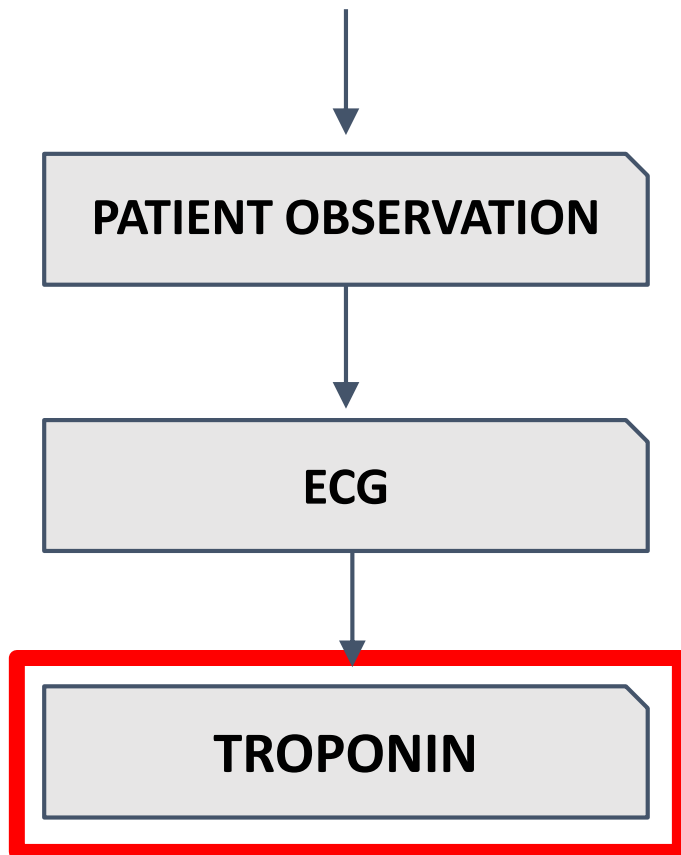
**TROPONIN**

CARDIAC MUSCLE PROTEIN SPECIFIC MARKER OF CARDIAC DAMAGE

# UNMET CLINICAL NEED



## THE ACUTE PATIENT



Gold-standard

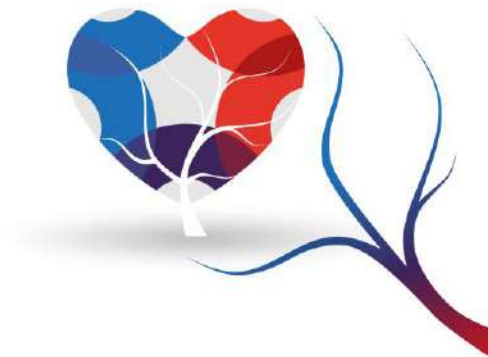
**2 measurements**

current methods:

**2 TO 6 HOURS +**

CURRENT SOLUTIONS  
**ARE NOT FAST ENOUGH**

## UNMET CLINICAL NEED



### **THE ACUTE PATIENT**

**PUSH FOR FAST DECISIONS**

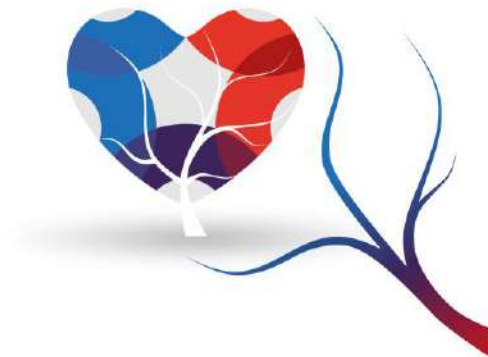
**80% NOT AMI**

**20% AMI**

causing unnecessary costs and overcrowded hospitals

**CURRENT SOLUTIONS**  
**ARE NOT FAST ENOUGH**

# UNMET CLINICAL NEED



## THE CHRONIC PATIENT

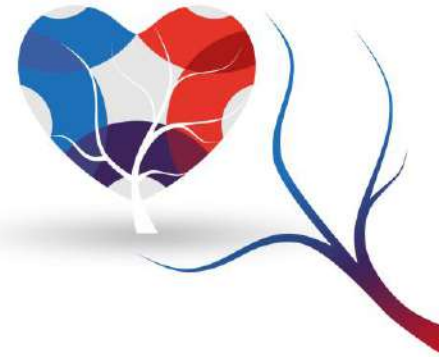
PUSH FOR GREATER SENSITIVITY

	Assay Criterion	Application Diagnosis Myocardial Infarction	Risk Stratification Secondary Prevention	Risk Stratification Primary Prevention
Conventional troponin		+	(+)	-
Contemporary sensitive troponin	10%CV ≤ 99th percentile	++	+	-
High sensitive troponin	Detectable in ≥ 50% of a general population	++	++	+
Super sensitive troponin	Detectable in ≥ 95% of a general population	?	?	?



# 9<sup>th</sup> CHALLENGES in CARDIOLOGY

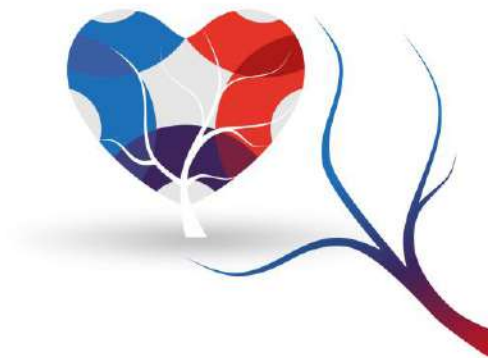
## COMPETITION





# 9<sup>th</sup> CHALLENGES in CARDIOLOGY

## COMPETITION



**NO TURNAROUND TIME**  
SHORTER TIME TO RESULTS

**30-90<sub>MIN</sub>**

# TECHNOLOGY

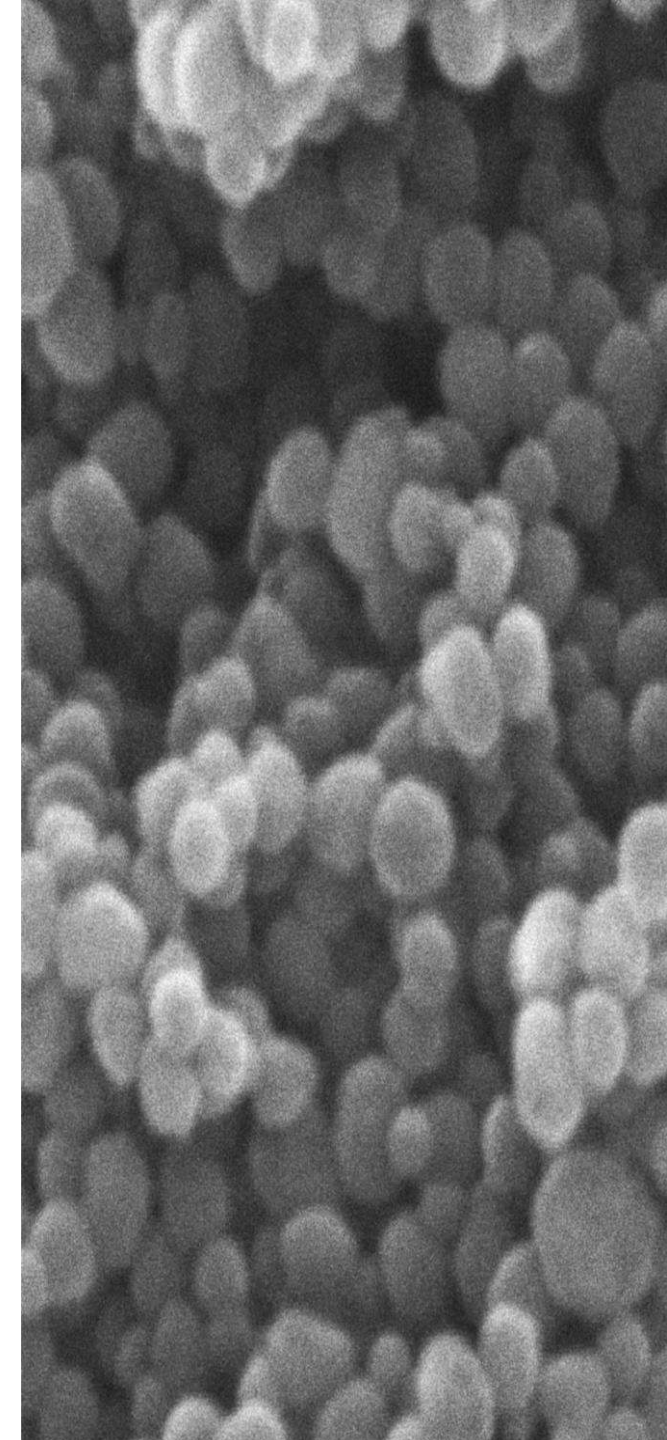
**customized  
NANOPARTICLES**

lowers  
**DETECTION LIMIT**

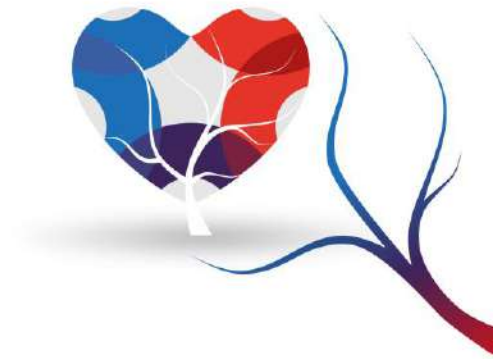
**SYNTHETIC  
COMPOUND**

binds specifically  
to **TROPONIN**

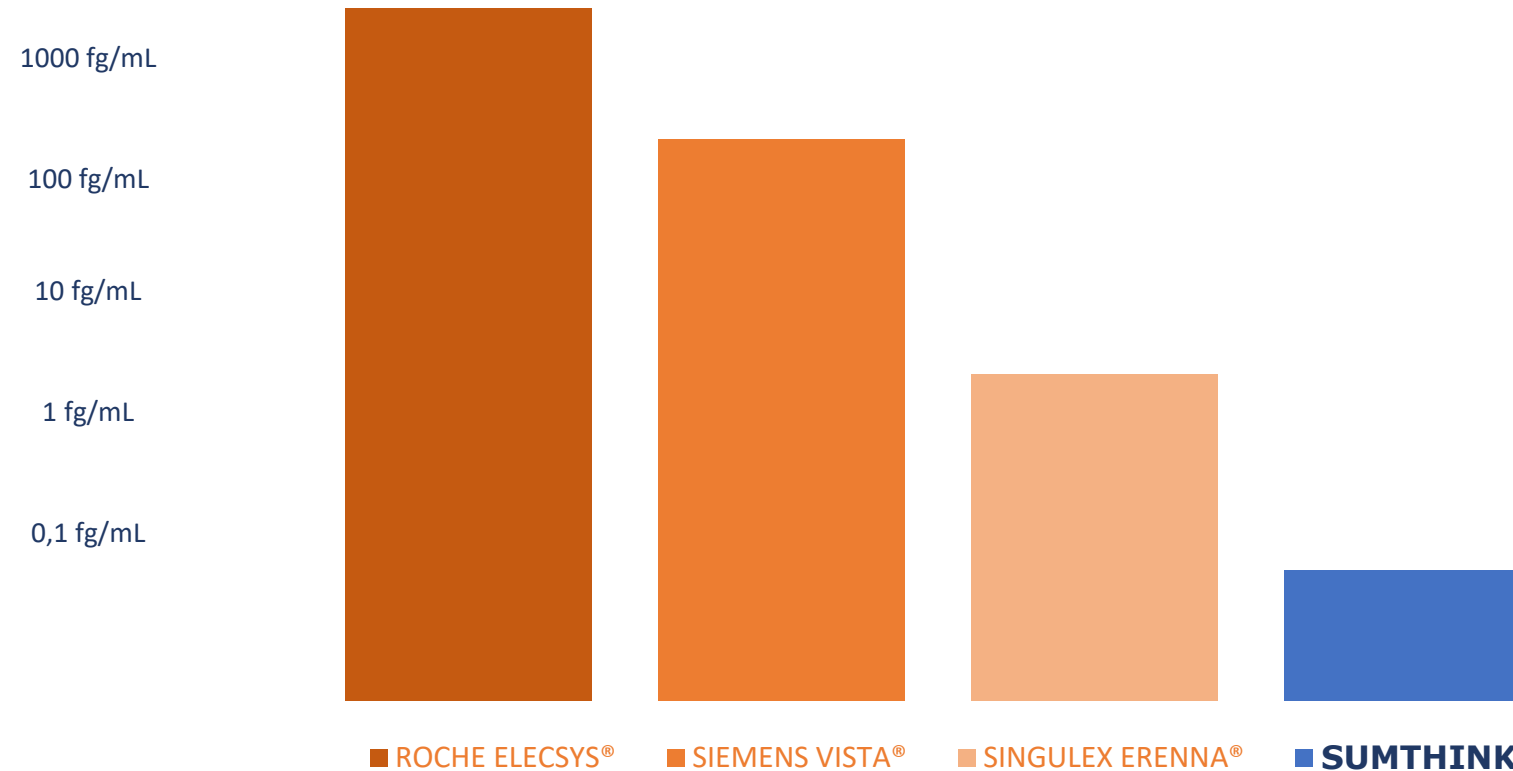
**LOWERING DETECTION LIMITS**  
allowing to precisely detect smaller  
**CONCENTRATIONS and VARIATIONS**  
**OF TROPONIN**



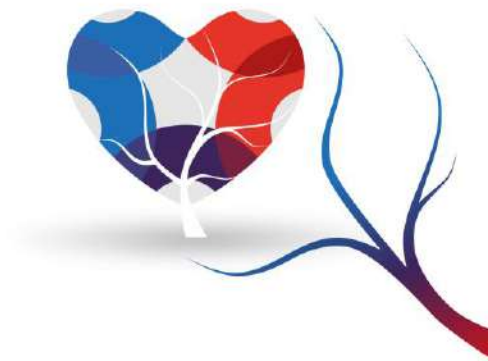
# COMPETITION



## DETECTION LIMIT



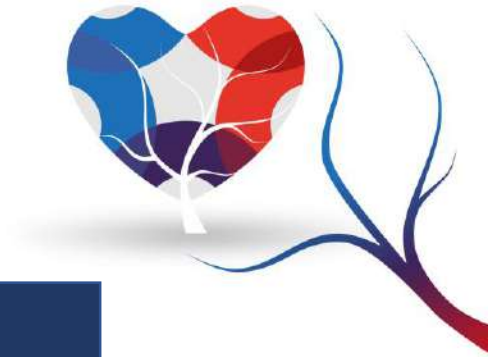
# PRODUCT



**PORTABLE AND USER-FRIENDLY DEVICE**



# UNMET CLINICAL NEED



## ISCHEMIC HEART DISEASE

### ACUTE

**80%**

**FASTER DISCHARGE**

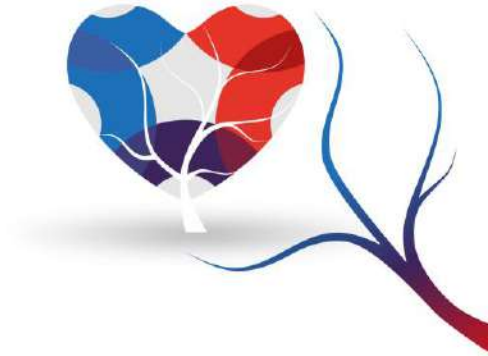
### CHRONIC

**PROGNOSTIC VALUE**  
**DECISIONAL INPUT**  
**TAILORED APPROACH**

**SAVING \$350.000**

**[PER HOSPITAL/ PER YEAR]**

## **MARKET**



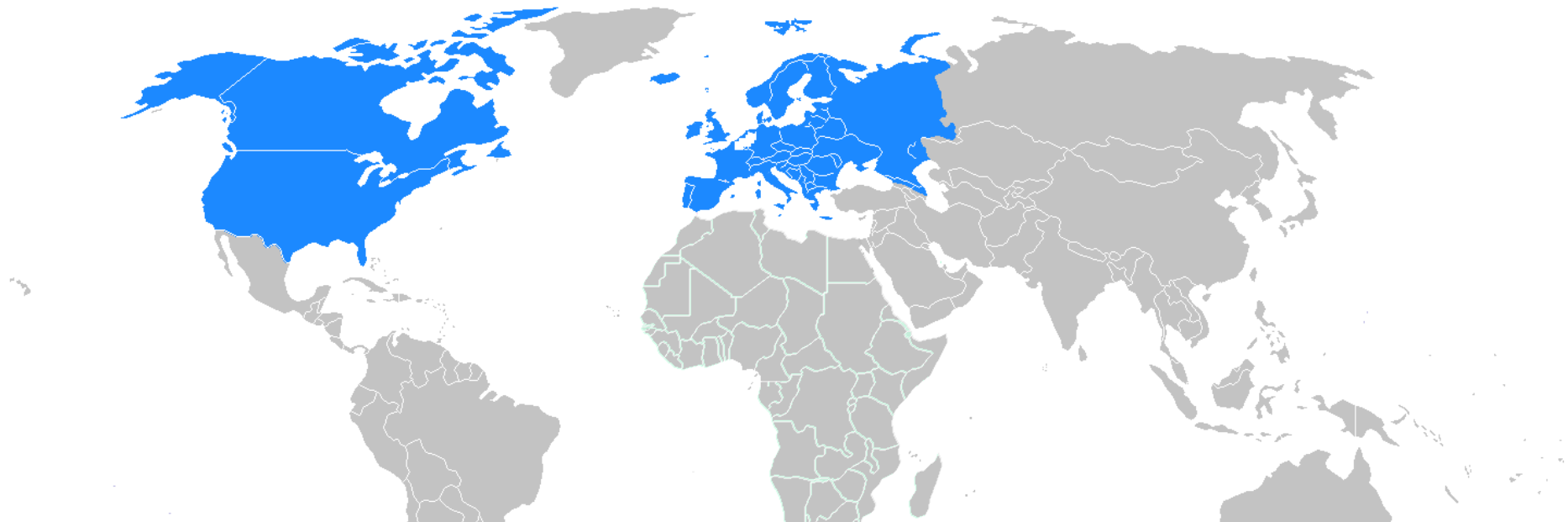
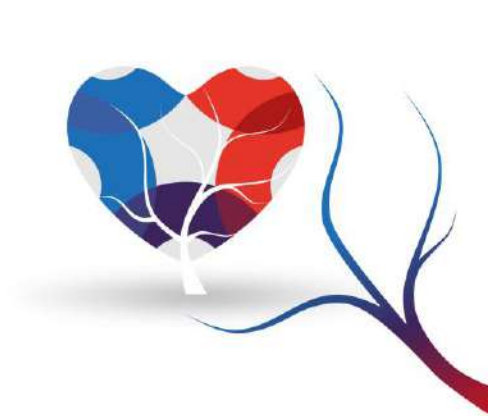
**ADDRESSABLE MARKET: \$1.25B**

### **TROPONIN DETECTION**

**POC: \$350 MILLION**  
**LAB: \$900 MILLION**

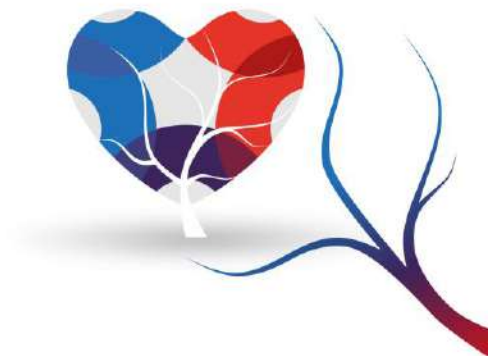
**12% GROWTH**





**21,812 HOSPITALS IN EUROPE AND NORTH AMERICA**

# BUSINESS MODEL

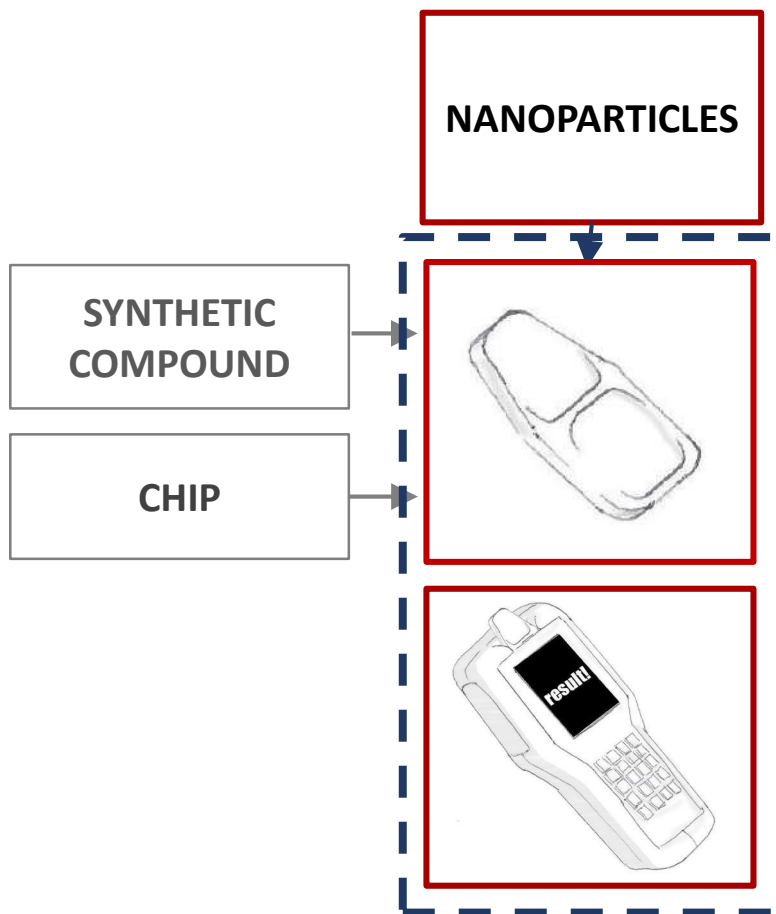


outsource

in house

distribution

customers



HOSPITALS  
CLINICS  
HOME?



# 9<sup>th</sup> CHALLENGES in CARDIOLOGY

## BUSINESS MODEL



RAZOR AND BLADE

HANDHELD DEVICE

or

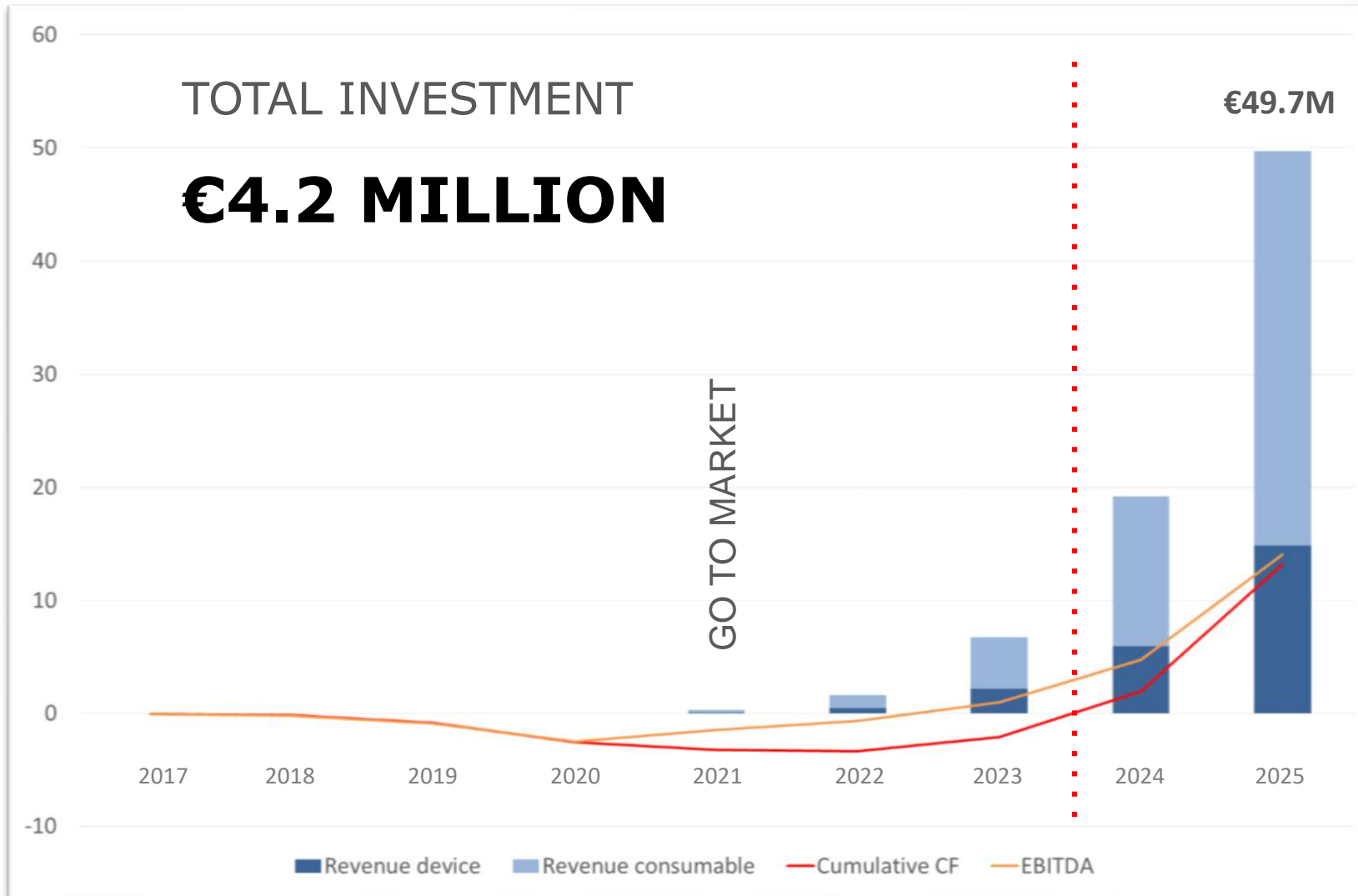
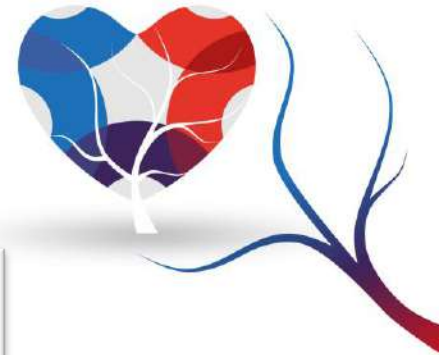
→ CONSUMABLES

multiple times

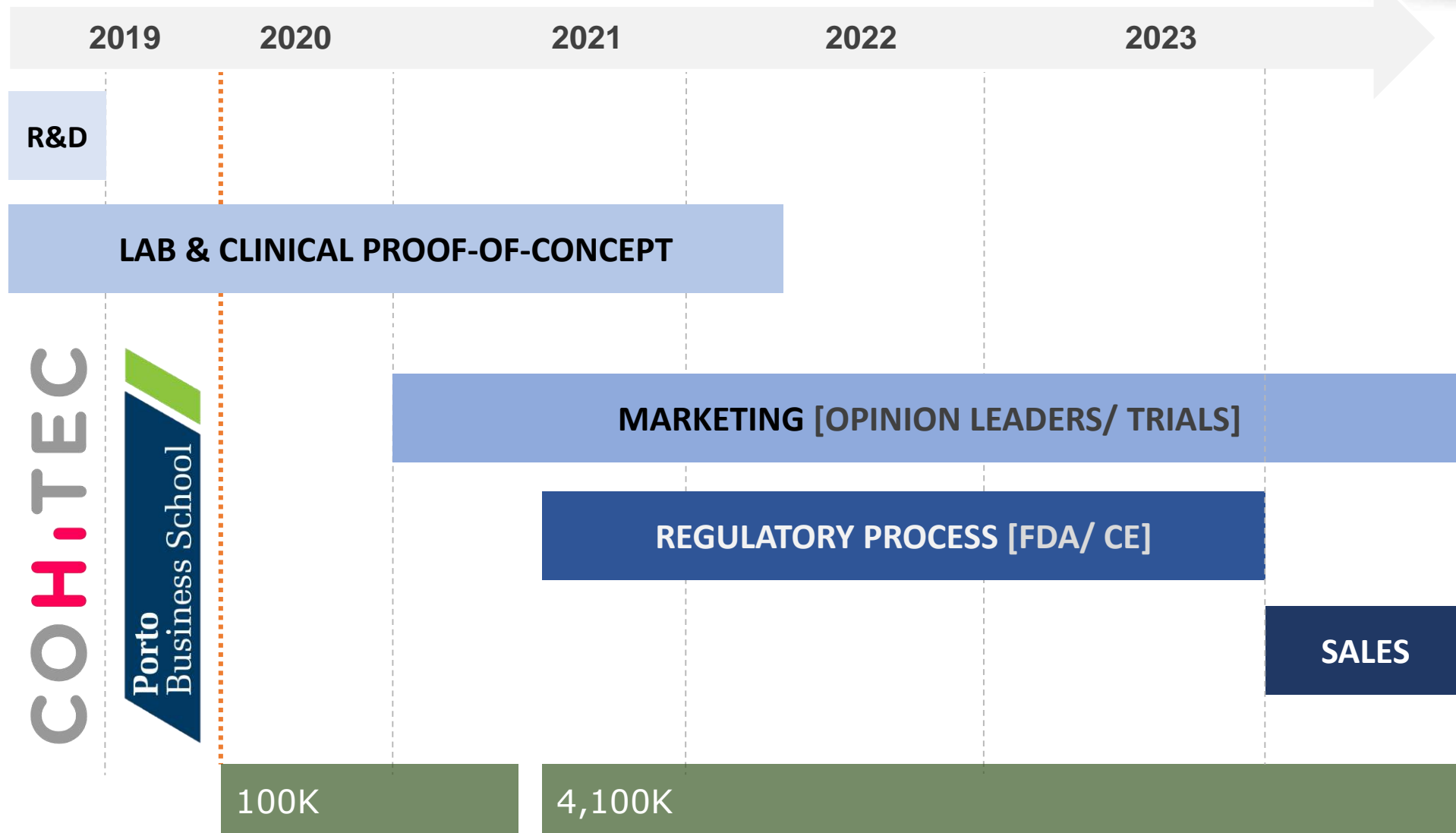
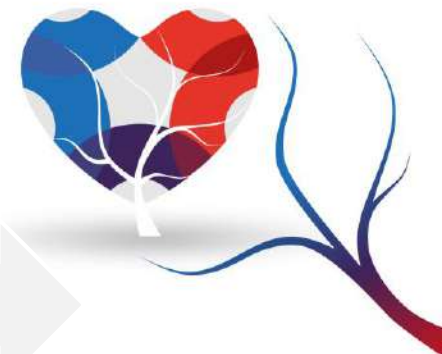
**PATENT AND LICENSING MODEL**

CONTINUOUS REVENUE

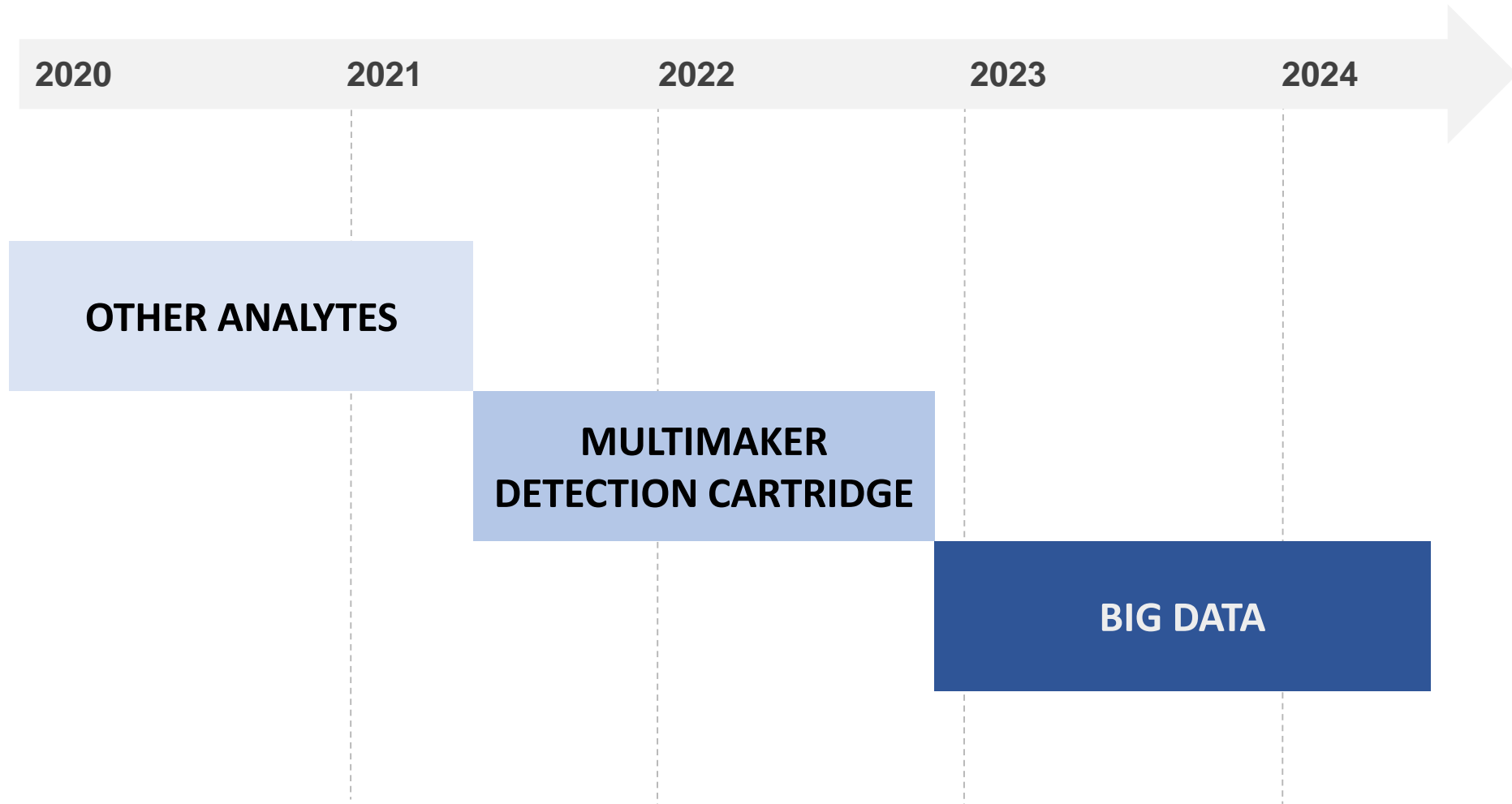
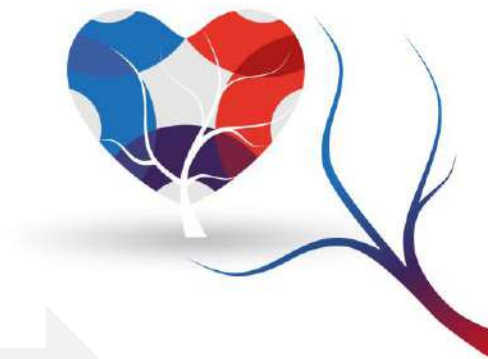
# BUSINESS MODEL



# ROADMAP



# PIPELINE





# 9<sup>th</sup> CHALLENGES in CARDIOLOGY

## TEAM

**MANUEL MARTINS**  
MAMARTINS@UA.PT

**CHEMIST PhD**

**TIAGO ADREGA**  
TIAGOADREGA@HOTMAIL.COM

**CARDIOLOGIST, GDBA**

## CONTESTS

**NORTEXCEL**  
CENTRE OF EXCELLENCE IN MEDICAL TECHNOLOGIES



**CARDIO ARENA**  
FOCUS ON INNOVATION

## PARTNERS



universidade  
de aveiro



Centro de Investigação em Materiais Cerâmicos e Compósitos

